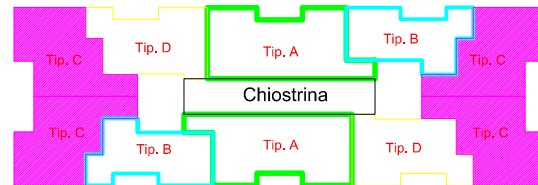


# EDIFICIO A

## SCHEDA TIPOLOGIA C

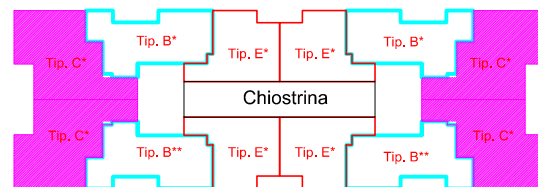
### SCHEDA TIPOLOGIA C\*

SCHEMA TIPOLOGIE  
PIANO 1°-2°-3°



APPARTAMENTI  
TOT. 4x3=12

PIANO 4°



APPARTAMENTI  
TOT. 4x1=4

Tipologia C (N.12)

SUL 83,76

SU 71,19

SNR 12,27

SP 12,35

SC 91,75

Tipologia C\* (N.4)

SUL 84,62

SU 72,05

SNR 12,27

SNR 17,58

SNR 86,81

SP 12,35

SC 117,82

CALCOLO SC

(Sup. Commerciale):

S.C. = SUL+SPR (sup. pertinenze rag.)

Ai sensi del B.I.R. si avranno:

SU+murature=SUL 100%

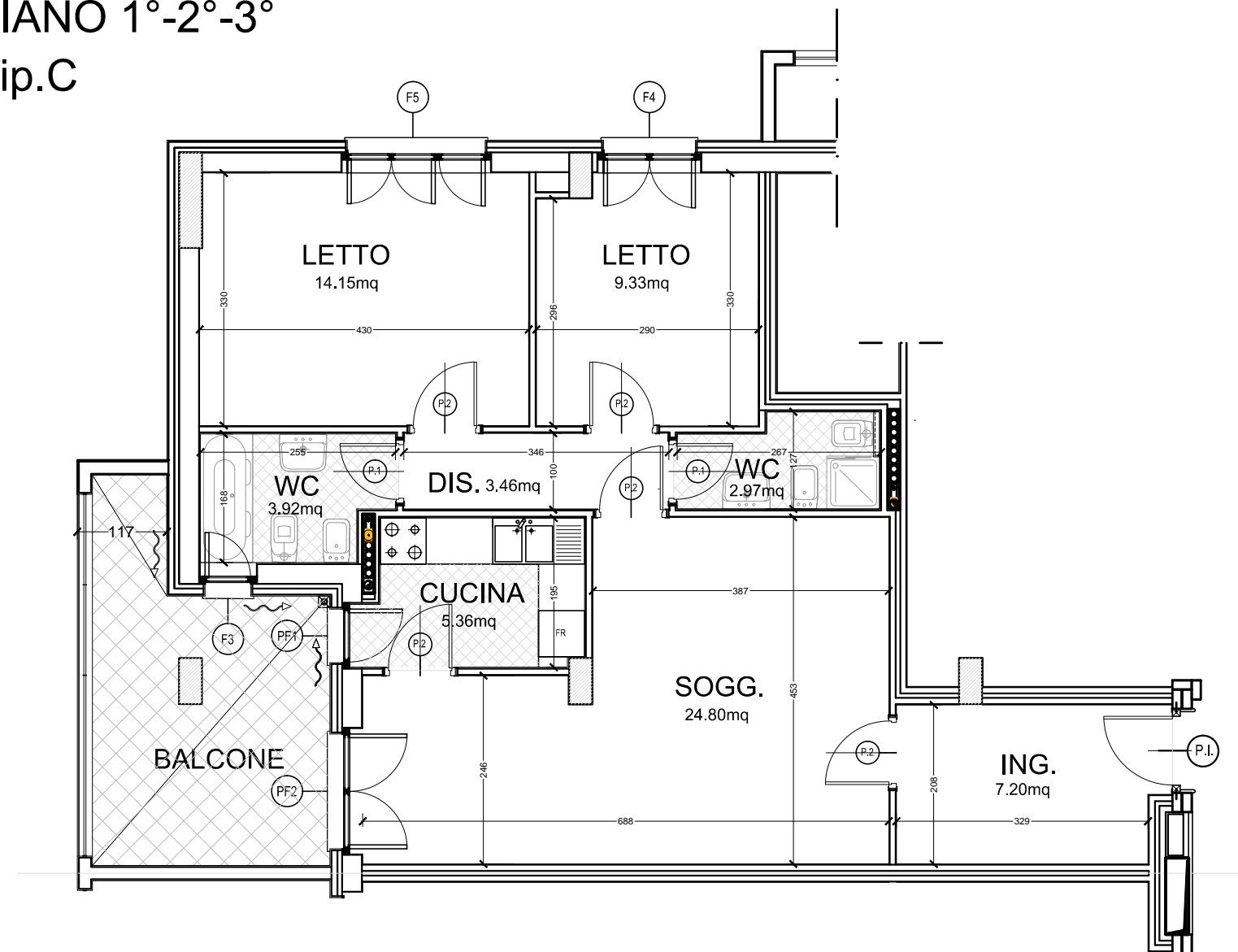
Balconi/Loggie 35%

Terrazzi/Lastrici 25%

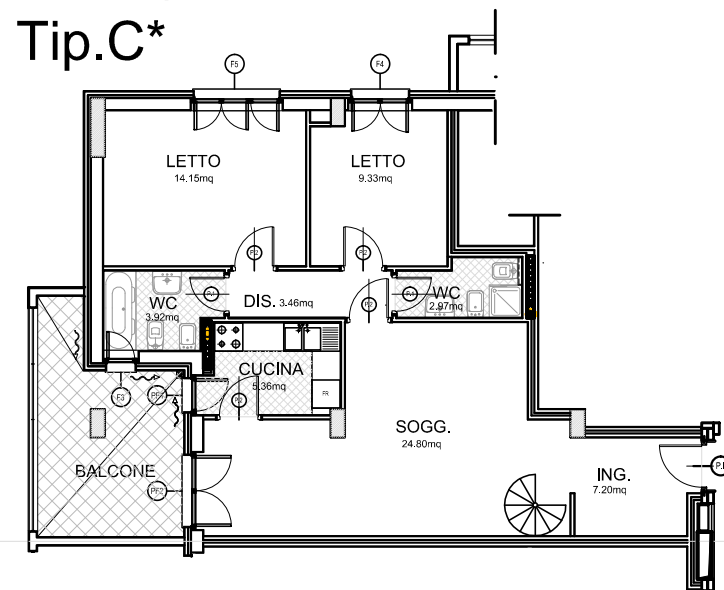
Soffitte 20%

Posti Auto 30%

## PIANO 1°-2°-3° Tip.C



## PIANO 4° Tip.C\*



## PIANO 5° (Soffitta e Terrazzo)

