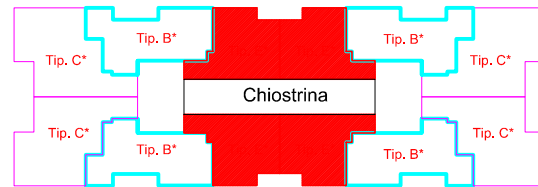


# EDIFICIO A SCHEMA TIPOLOGIA E SCHEMA TIPOLOGIA E\*

SCHEMA TIPOLOGIE  
PIANO 4°



APPARTAMENTI  
TOT. 4x1=4

## Tipologia E (N.2)

SUL 57,13  
SU 48,10  
SNR 10,18  
SNR 13,45  
SNR 45,95  
SP 12,35  
SC 78,57

## Tipologia E\* (N.2)

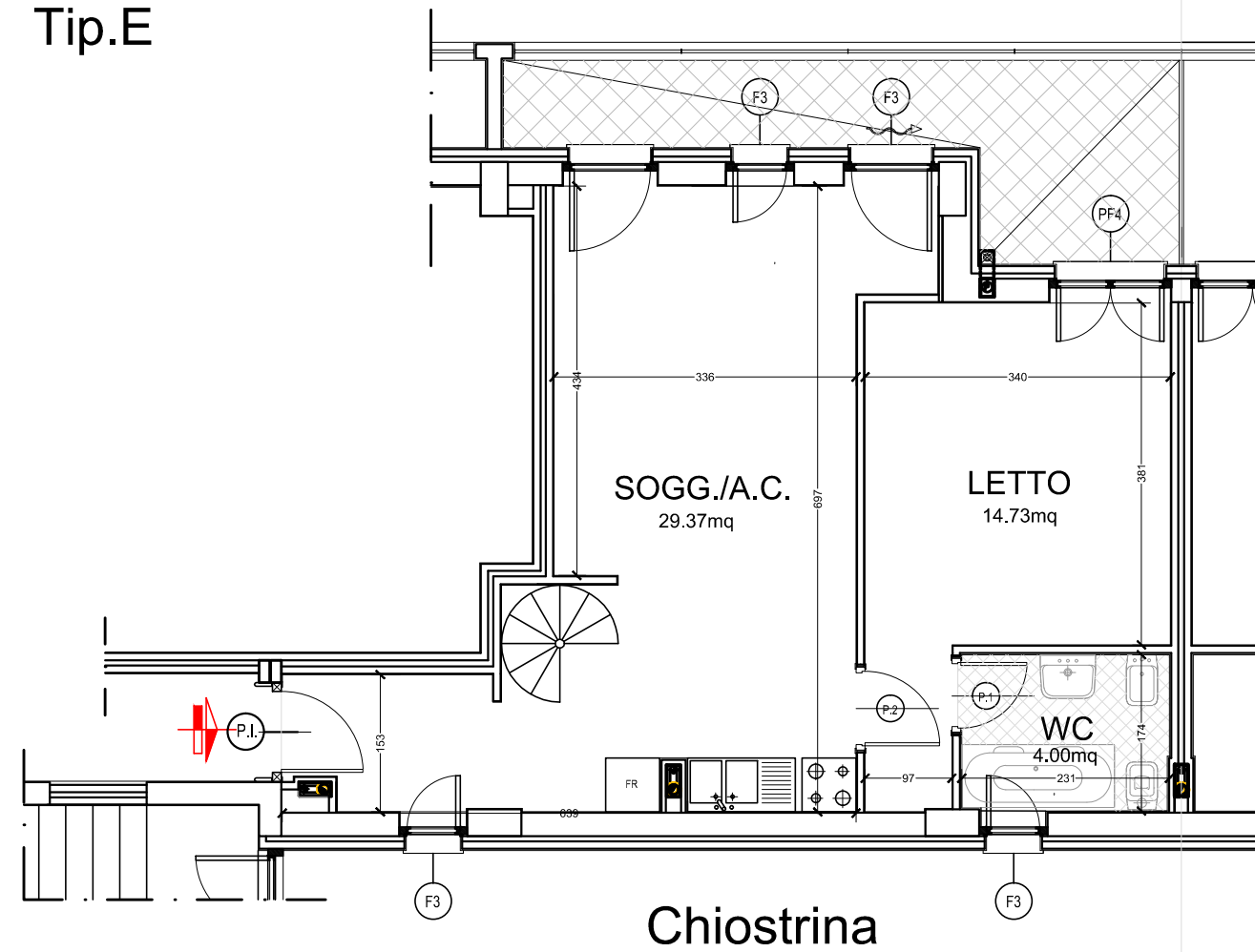
SUL 57,13  
SU 48,10  
SNR 10,18  
SNR 20,95  
SNR 38,80  
SP 12,35  
SC 78,28

## CALCOLO SC

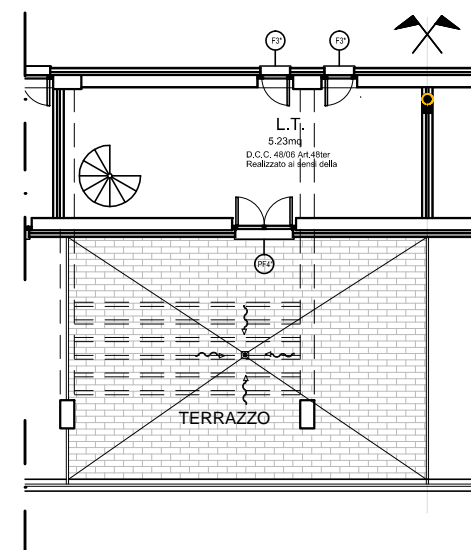
(Sup. Commerciale):

S.C. = SUL+SPR (sup. pertinenze rag.)  
Ai sensi del B.I.R. si avranno:  
SU+murature=SUL 100%  
Balconi/Loggie 35%  
Terrazzi/Lastrici 25%  
Soffitte 20%  
Posti Auto 30%

## PIANO 4° Tip.E



## PIANO 5° (Soffitta e Terrazzo) Tip.E



## Tip.E\*

